



**COMPANY  
PROFILE**





ASK Global Logistic Services was established with experienced team who has vast knowledge in International trade including sourcing, International transport management. We are proud to say that we are an Indian company with a global outlook. We deliver reliable, cost effective and customized solutions in the domain of International sourcing and International transport Management. We function as a Single Window - Sea - Air - Road - Logistics Solutions Provider. Strategic, Client Focused, Resolute, Pro-Active, Innovative, on continuous improvement and adaption to the ever changing market needs. An important part of our customer service is in assisting clients on the documentation required for the import and export clearance process and also provides advice on trade, tax rates and duty exemptions and eligible export incentive etc.

CEO Message

## Overview

**ASK GLOBAL LOGISTIC SERVICES** is established with experienced team who has vast knowledge in International trade including sourcing, International transport management. We are proud to say that we are an Indian company with a global outlook. We deliver reliable, cost effective and customized solutions in the domain of International sourcing and International Transport Management





# **Vision**

To grow and be considered as one of the most reliable & flexible Freight & Logistics Company that serves freight forwarding plus transportation and logistics segments in an exceptionally, professional, short time, and quality consciousness manner

“The flexibility to best meet our customers, requirements grows out of the stable structures that are a Key feature of ASK GLOBAL LOGISTIC SERVICES as a Company.

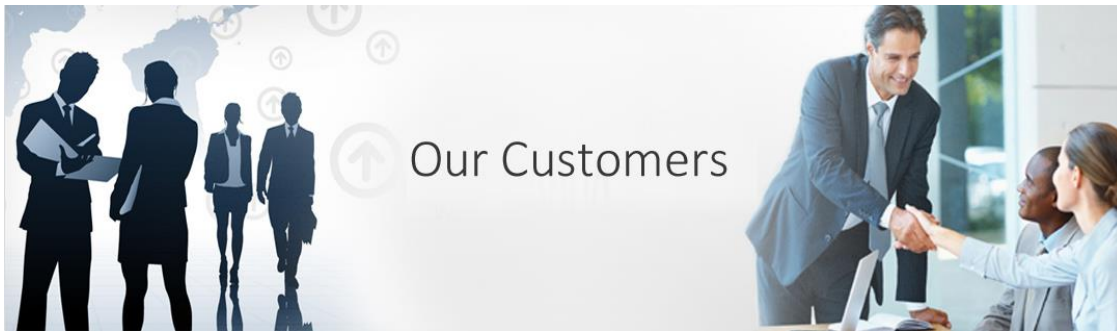


## **Mission**

“To satisfy our customers with total Logistic solutions that are timely, innovative, effective and efficient led by a workforce dedicated to quality and delivery”



- ▶▶ ASK Worldwide Network
- ▶▶ One - stop for Total Logistics Solutions
- ▶▶ Committed to High Quality Services
- ▶▶ Highly Trained, Motivated and Result Oriented Staff
- ▶▶ Excellent Team Work
- ▶▶ Competitive Rates
- ▶▶ Positive Approach
- ▶▶ Transparency



Our Customers



Focused on our customer's needs we provide integrated logistics solutions of outstanding quality and operational excellence.

To become the extension of your business supported by our committed and dedicated professional team with 24/7 reach.

Our commitment to integrity is a cornerstone of our past, present and future success. This drives our dedication to uphold ourselves to the highest standards of business conduct. We are committed to upholding our Code of Ethics in every transaction. Through its important guidelines, the code help us understand how to do business responsibly - how to put integrity first. Nothing ever should compromise our unyielding commitment to performance with integrity. Challenge us to be the part of your solutions

"Relationships with our customers are our major focus"

"We say what we mean and we honor our word in business dealings"

**CHALLENGE US TO BE THE PART OF YOUR SOLUTIONS**



# OUR CORE SERVICES

Air Freight

Sea / Ocean Freight

Land Freight

Road Transportation

Warehousing

Buyers Consolidation

Custom Clearance

LCL Consolidation & FCL

Project Logistics

Consultancy Services – Foreign Trade Policy

Consultancy Services – Customs Related Policy

International Freight and Forwarding







# Air Freight

- ✚ Fast, efficient and reliable supply chain
- ✚ Freight forwarding to arrival airports or door to door delivery
- ✚ Direct airline and express services for more urgent consignments
- ✚ Confirmed space allocation facilities with all reputed Air Carriers
- ✚ Cargo Pick-up / Delivery Services
- ✚ Personalized customer service units geared-up to face any eventualities
- ✚ Customs Clearance
- ✚ Export documentation
- ✚ Import & Export handling and consolidation
- ✚ Cost effective air combination
- ✚ Contract with major international carriers



# **SEA / OCEAN FREIGHT**

- ✦ FCL, LCL and Break Bulk booking services
- ✦ On-dock and Off-dock cargo stuffing facilities
- ✦ Offer economic rates
- ✦ Confirmed space allocation with all major shipping lines
- ✦ Licensed customs broker
- ✦ Cost effective sea combination
- ✦ Export and import customs clearance
- ✦ Strong links with local customers
- ✦ Efficient staff at customs and port zone Highly skilled professionals in shipping industry at your service





# LAND FREIGHT

- 📌 Competitive prices
- 📌 Door-to-door forwarding services
- 📌 Proof of delivery for all shipments
- 📌 Customs Inspection & Exit proofs
- 📌 Reliable transit times
- 📌 Fleet with modern Equipment's
- 📌 High service quality & reliability

## ROAD TRANSPORTATION

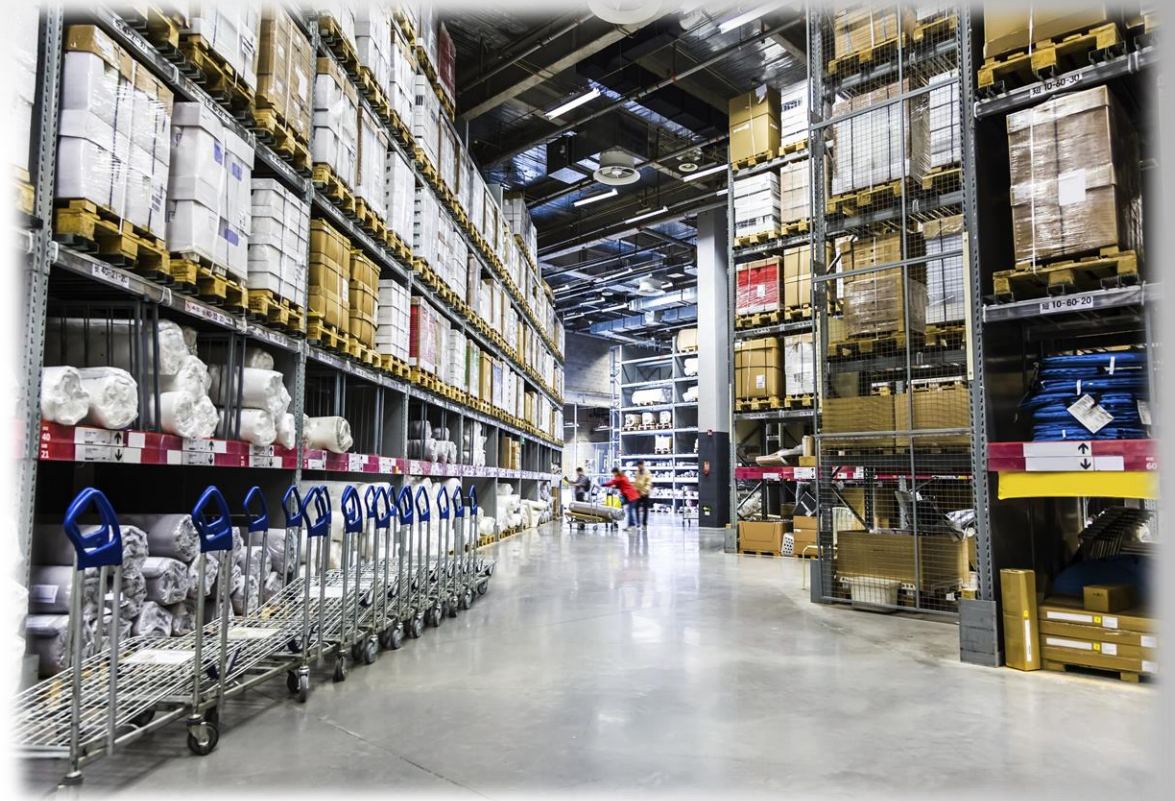
- 📌 Committed to achieve customers' delight
- 📌 Highly efficient working procedures
- 📌 Experience in handling different commodities
- 📌 Customer concentric policy and actions approach
- 📌 Complete documentation
- 📌 Drivers with local language knowledge
- 📌 Assurance of safe delivery
- 📌 Dependable and experience drivers and staff





# WAREHOUSING

- ✦ Forklift and man-lift facilities including all types of storage
- ✦ Safe packing with professional setup of interlocking & racking
- ✦ Cross stuffing
- ✦ Supply chain management
- ✦ Lashing & Skidding
- ✦ Pick & Pack
- ✦ Exhibition Cargo
- ✦ Perishable cargo
- ✦ Personal Effects & Relocations



## BUYERS CONSOLIDATION

The basic Buyer's consolidation service allows manufacturing companies, end destination buyers, and retailers to bundle products purchased from various vendors in a particular country or region, into one shipment / multiple shipments; loaded into one / multiple containers at the port of loading and hence reducing freight cost and delivery charges at destination.





# CUSTOM CLEARANCE

- ✦ Fast and reliable service at Airport and Sea port
- ✦ Clearing and Forwarding of Any Size
- ✦ Any weight/ Any Volume cargo LCL/FCL at Sea port
- ✦ Processing of all necessary documents
- ✦ Collection of clearing documents
- ✦ Transportation and Delivery to your sight
- ✦ Careful loading/ Unloading, Proper monitoring
- ✦ Storage and Warehouse facility
- ✦ Planning weight/ Any Volume cargo LCL/FCL at Sea port
- ✦ Processing of all necessary documents
- ✦ Collection of clearing documents & Special handling







# **LCL Consolidation & FCL**

- ✚ Door pick-up and delivery
- ✚ Export processing and permit applications and certifications
- ✚ Warehousing and Distribution
- ✚ Inventory management

## **Project Logistics**

- ✚ Planning, coordination and execution of projects
- ✚ Transportation and further ship to the final destination.
- ✚ Dry bulk cargo: Part or full chartering (air, sea or road)
- ✚ Special equipment transport and handling
- ✚ Technical support, Trained staff for handling project cargo
- ✚ Handling overweight and over size cargo
- ✚ Site survey, dismantling projects at site
- ✚ Clearing and Forwarding of Any Size
- ✚ Any weight/ Any Volume cargo LCL/FCL at Sea port
- ✚ Processing of all necessary documents
- ✚ Collection of clearing documents
- ✚ Transportation and Delivery to your sight
- ✚ Specialized in clearing old and used machinery, Special handling  
Storage and Warehouse facility
- ✚ Plants, Irrigation, Oil & Gas (both Offshore & On shore), Petro Chemical,  
Heavy industries and civil construction projects.





DGFT Related Matters :

- ✚ IEC Code Number, Digital signature for on-line application, Fixation of Norms for Export Products at DGFT, Delhi for Duty Exemption Schemes.
- ✚ Application and Licenses for the Deemed Export Benefits, Capital Goods Imports, DEEC, DFRC, MEIS, SEIS, Duty Drawback & Drawback Fixation.
- ✚ Regularizing pending matters at DGFT, Finance Ministry and Customs in connection with outstanding export obligation, LUT | Bond waiver | redemption in respect of Advance Licenses and EPCG Licenses.

Custom and Excise Related Matters :

- ✚ Duty Drawback under section-74 and 75 and Drawback Fixation.
- ✚ DEEC, DFRC and DEPB verification with Customs Department.
- ✚ Bank guarantee and Bond Cancellation.
- ✚ Import Refund and SVB related matter.
- ✚ Excise refund.
- ✚ AEO-T1, AEO-T2, AEO-T3 and AEO-LO accreditation

EOU and EPZ related Matter :

- ✚ Develop /Set up new EOU, STPI, EPZ, EHTPI, and BTP
- ✚ EOU transaction monitoring and audit.
- ✚ DEEMED Export Incentives and Drawback Claim refund.



# INTERNATIONAL FREIGHT & FORWARDING

- ✚ Shipment Booking, Bill of Lading Preparation
- ✚ Preparation and Electronic Filing of Electronic Export Information (EEI, formally)
- ✚ Preparation, Consolidation and Forwarding of Export Documents
- ✚ Representative/agents offices worldwide
- ✚ Logistics & Warehousing – Long & Short Term Storage for all types of Cargo
- ✚ Selling New & used containers, Wooden Boxes & Wooden Pallet
- ✚ Shipment Monitoring and Project Management Packing Services- tailor made packages in conjunction with airline requirements



## COMPLETE LOGISTIC SOLUTIONS

ASK GLOBAL LOGISTIC SERVICES is one of the pioneers in transportation and logistics organization. As a group it offers a complete range of Supply chain solutions that harness the use of technology and decision support tools. It is committed to offer effective, industry focused & customer centric solution that integrate the various processes of its clients to organize cost effective, reliable, and timely products and information flow. We believes that any business conduct can be ethical only when it rest on the nine core values of Honesty, Integrity, Respect, Fairness, Purposefulness, Trust, Responsibility, Caring and Commitments.

### Our Partners

**ASK GLOBAL LOGISTIC SERVICES partnerships with an exclusive network of agents as Worldwide & Middle East transportation and shipping.**

**Our strength worldwide and commitments and continually better Improved services is built from our customer feedback. We promise to deliver not just your cargo, but also peace of mind.**





### **Registered Office :**

# 102, Narayan Bhavan, 82/86, Perin Nariman Street, Fort, Mumbai - 400 001

### **Zonal Office :**

236, HINDUSTAN KOHINOOR COMPLEX, LBS ROAD, VIKHROLI (WEST), MUMBAI-83

### **Contact Details :**

( 22 ) 2102 0455 | ( 22 ) 2102 0456 Helpline 24X7 | + 91 93237 44659  
info@askgloballogistic.com | www.askgloballogistic.com

